



Sprinkler Pressure Gauge

Model: PFE

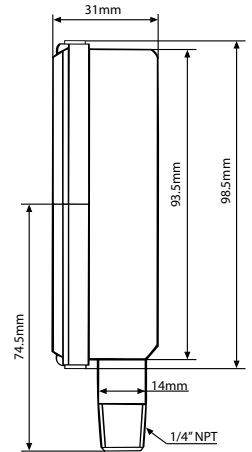
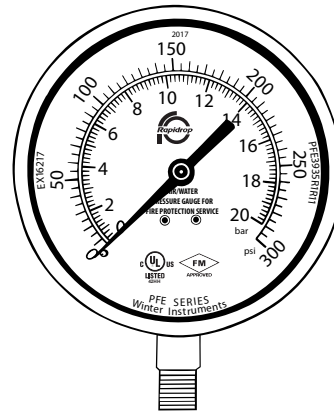
Features

- Specially designed for fire sprinkler systems
- Suitable for air and water media
- Corrosion resistant case
- Dual Scale (bar/psi) pressure ratings
- Approved by Factory Mutual (FM) and listed by Underwriter Laboratory (UL-393), USA and Canada
- Internal pointer travel over-stop
- 5 years warranty



Specification

Dial	3.5" (90mm), white aluminum with black and red markings
Case	Black plastic
Lens	Polycarbonate, threaded
Socket	Brass
Connection	1/4" NPT standard, bottom
Bourdon Tube	Phosphor bronze
Movement	Brass
Pointer	Aluminum, black
Welding	Silver Alloy
Working Pressure	Maximum 75% of full scale value
Ambient/Process Temperature	-40°C to 65°C (-40°F to 150°F)
Accuracy	3-2-3% ASME Grade B
Enclosure Rating	IP52



Important Installation Information

- *Gauges* must only be installed by a competent person in accordance with requirements of the local authority having jurisdiction. Deviations from these standards will invalidate warranty.
- It is the responsibility of the installing contractor to include a copy of this document in the sprinkler system installation, operating and maintenance manual.
- Alterations to products will void any warranty.
- *Gauges* should be inspected and maintained during routine sprinkler system inspections by a competent person in accordance with national codes/requirements.
- Failure to follow these instructions could cause improper operation, resulting in personal injury and/or property damage.
- For further details and technical support please contact your Rapidrop sales representative.

Manufactured by Winters Instruments who hold the FM Approval and UL Listing

VEVX.EX16217 - Gauges, Pressure

Gauges, Pressure

See General Information for Gauges, Pressure

WINTERS INSTRUMENTS

EX16217

121 RAILSIDE RD
TORONTO, ON M3A 1B2 CANADA

Bourdon spring (tube) type, Models PFE3932, PFE3932R1, PFE3933, PFE3933R1, PFE3935, PFE3935R1, PFE3932R1R3, PFE3932R1R11, PFE3933R1R3, PFE3933R1R11, PFE3935R1R3, PFE3935R1R11, PFE3933R1R11T2-LIFECO, PFE3935R1R11T2-LIFECO, bourdon tube type gauge in 3-1/2 in. size with dial graduations of 0-300 psi. Models PFE3932, PFE3932R1, PFE3933, PFE3933R1, PFE3932R1R3, PFE3932R1R11, PFE3933R1R3, PFE3933R1R11, PFE3935R1R3, PFE3935R1R11, PFE3935, PFE3935R1, PFE3933R1R11T2-LIFECO, PFE3935R1R11T2-LIFECO, bourdon tube type gauge in 3-1/2 in. size with dial graduations of 0-80 psi retarded to 250 psi.

Trademark and/or Tradename:    

Last Updated on 2019-08-28

The appearance of a company's name or product in this database does not in itself assure that products so identified have been manufactured under UL's Follow-Up Service. Only those products bearing the UL Mark should be considered to be Certified and covered under UL's Follow-Up Service. Always look for the Mark on the product.

UL permits the reproduction of the material contained in the Online Certification Directory subject to the following conditions: 1. The Guide Information, Assemblies, Constructions, Designs, Systems, and/or Certifications (files) must be presented in their entirety and in a non-misleading manner, without any manipulation of the data (or drawings). 2. The statement "Reprinted from the Online Certifications Directory with permission from UL" must appear adjacent to the extracted material. In addition, the reprinted material must include a copyright notice in the following format: "© 2020 UL LLC"

Pressure Gauges

Gauges for sprinkler systems and fire pumps are designed for use with air or water. These gauges are usually of the Bourdon tube type. The moving parts are fabricated of appropriate corrosion-resistant materials.

When installed on the air side of a dry pipe system, a retard type gauge may be used. This gauge is assembled with a tube appropriate to the unretarded pressure range of the gauge and is provided with a spring to resist the full scale load.

The two common sizes are 4 1/2 and 3 1/2 in. diameter. These gauges can be calibrated with a hydraulic testing unit by adjusting the dial pointer to read correctly at known pressures. Accuracy requirements are that the gauge be correct within 2% over the center third of its scale and within 3% over the remaining two-thirds. Dial marking subdivisions correspond to the maximum accuracy of the gauge.

For service on fire pumps where the suction may be taken under a lift, compound pressure vacuum gauges are available graduated in pressure units over both the pressure and vacuum scales, and are designed not to be injured by vacuum.

To minimize possible damage and provide maximum accuracy, gauges should be selected with scales of about twice the maximum system pressure.

Model PFE pressure gauge

Air or Water Pressure Gauge - Model PFE Series, 3-1/2 in. (89 mm) size, Plastic Case

- 0 to 80 to 250 psi (0 to 550 to 1750 kPa) Retard Pressure Gauge
- 0 to 300 psi (0 to 2000 kPa)

This gauge has a 1/4 in. male NPT bottom connection.

Company Name:	WINTERS INSTRUMENTS
Company Address:	121 Railside Rd , Toronto, Ontario M3A 1B2, CAN
Company Website:	http://winters.com
New/Updated Product Listing:	No
Listing Country:	Canada
Certification Type:	FM Approved
Class of Work:	2311-Air, Steam & Water Gauges