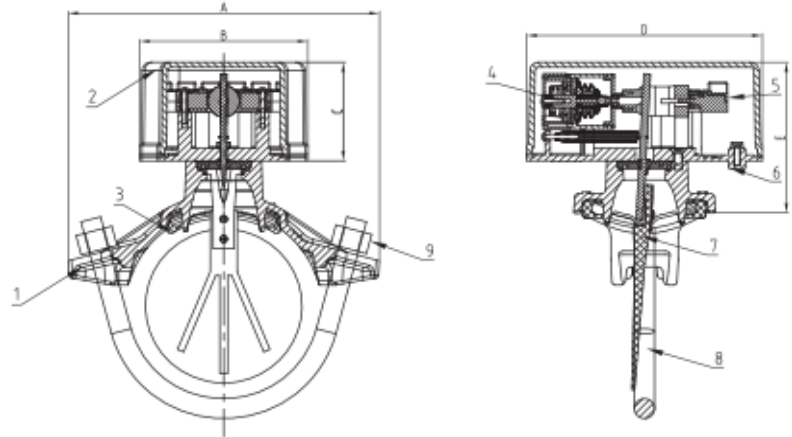




Water Flow Detector



General Description

The Rapidrop Model RDWFDR-2 is a Vane type Waterflow detector for use on wet sprinkler systems. It is UL Listed for use on steel pipe. Available in sizes 50mm to 200mm. The Vane insert is non-corrosive and the enclosure is suitable for indoor or outdoor use.

The waterflow detector switch contains two single pole, double throw, snap action switches and an adjustable pneumatic retard. The switches are actuated when a flow of 10 GPM (38 LPM) or more occurs downstream of the device. This flow condition must exist for a period of time long enough to overcome the selected retard period.

Connection Ends

AWWA C606

Maximum Working Pressure

365 psi

Temperature Range

0° - 68°C

Coating

Fusion Bonded Epoxy Coating.
In accordance with ANSI /AWWA C550

Electrical Ratings

125 / 250 VAC 5A 24/30 VDC 3A

Minimum Flow Rate

4 - 10 GPM

Enclosure Rating

IP54

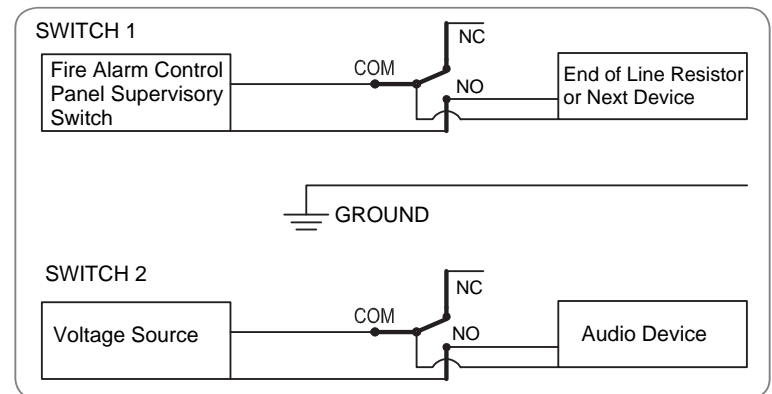
Material Specification

Sr.	Description	Material
1	Body	ASTM A536,65-45-12
2	Cover	Aluminum Alloy
3	Gasket	EPDM
4	Delay Device	Plastic
5	Signal Connection	N/A
6	Connection Plate	Aluminum Alloy
7	Vane	Plastic
8	U-Bolt	Carbon Steel Zinc Plated
9	Nuts	Carbon Steel Zinc Plated

Dimension

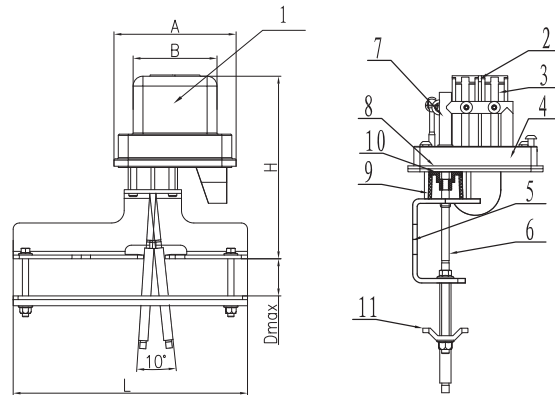
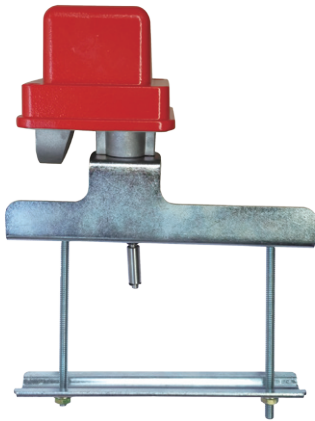
Size	A	B	C	D	E	Hole Dia.
50	116	100	59.5	140	79.5	32
65	120	100	59.5	140	79.5	32
80	145	100	59.5	140	80.9	51
100	185	100	59.5	140	98.5	51
150	254	100	59.5	140	90.4	51
200	298	100	59.5	140	90.5	51

Wiring Diagram





Supervisory Switch



General Description

The Rapidrop Model RDOSYS-2 is an anti-tamper switch used to monitor the open / closed position of an OS&Y type gate valve. The switch contains two sets of SPDT contacts. The switch mounts easily to most OS&Y Valves ranging from 2" to 24" (50 mm – 600 mm). The cover is held in place by tamper resistant screws. Cover is suitable for both indoor & outdoor use.

Temperature Range

-10° - 80°C

Cover

Tamper Resistant Screws
Optional Cover Tamper Switch Available

Electrical Ratings

15Amps at 125 / 250 VAC

Enclosure Rating

IP65

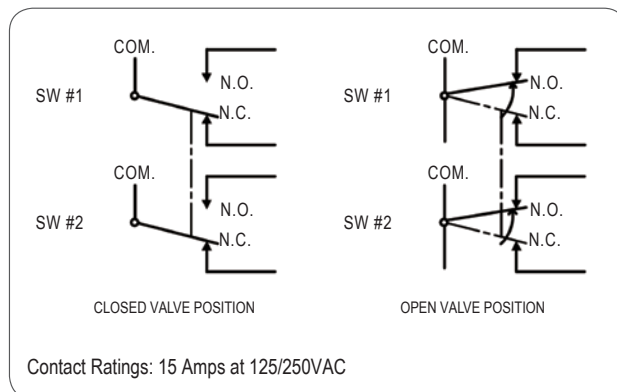
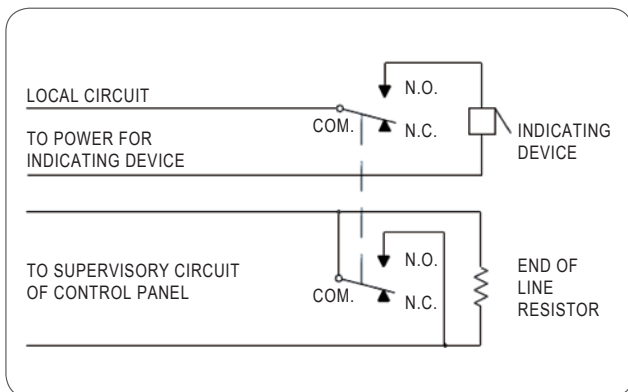
Material Specification

Sr.	Description	Material
1	Outer Shell	ADC12
2	Brace	Carbon Steel Q235
3	Micro Switch	
4	Base	ADC12
5	Connection Plate	Carbon Steel Q235
6	Driving Lever	AISI 304
7	Axis	Nylon
8	Sealing Gasket	CR Foam Cotton
9	Pressing Sleeve	PTFE
10	Rubber Ring	EPDM
11	Clamp Plate	Carbon Steel Q235

Dimension

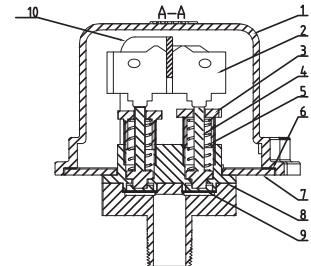
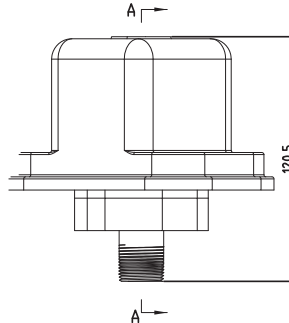
Size	A	B	H	L	Dmax
50 - 400	99	55	145	200	105
450 - 600	99	55	145	350	135

Wiring Diagram





Pressure Switch



General Description

The Rapidrop Model RD-PS is a Pressure Actuated Switch designed for the detection of a change in waterflow conditions in automatic fire sprinkler systems, including Wet pipe systems, Dry pipe systems, Pre-action systems and Deluge systems. The Model PS is also suitable to provide a low-pressure supervisory signal and is available in three configurations, PS10-2, PS40-2 and PS120-2. The cover is secured with tamper resistant screws and is suitable for indoor or outdoor use.

Models

RDPS10-2, RDPS40-2 and RDPS120-2.

Connection

1/2" - 14NPT

Temperature Range

-10° - 80°C

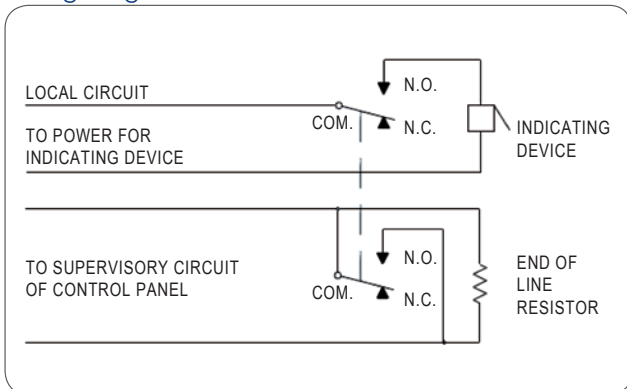
Cover

Tamper Resistant Screws
Optional Cover Tamper Switch Available

Electrical Ratings

15Amps at 125 / 250 VAC

Wiring Diagram

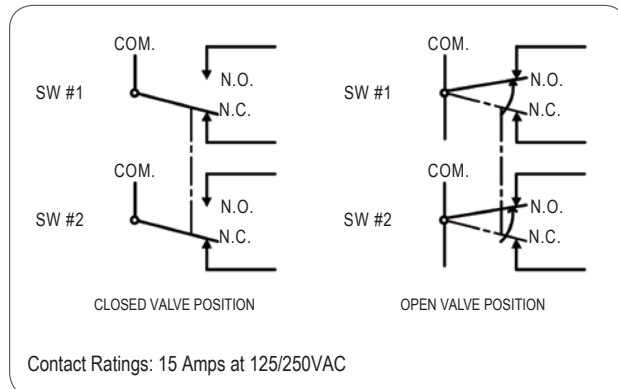


Material Specification

Sr.	Description	Material
1	Outer Shell	ADC12
2	Micro Switch	
3	Regulating Accessories	PA66+GF30
4	Stem	PA66+GF30
5	Compression Spring	65#
6	Sealing Washer	PA66+GF30
7	Back Shell	ADC12
8	Pressure Parts	PA66+GF30
9	Pressure Diaphragm	EPDM
10	Micro Stents	Carbon Steel Q235

Enclosure Rating

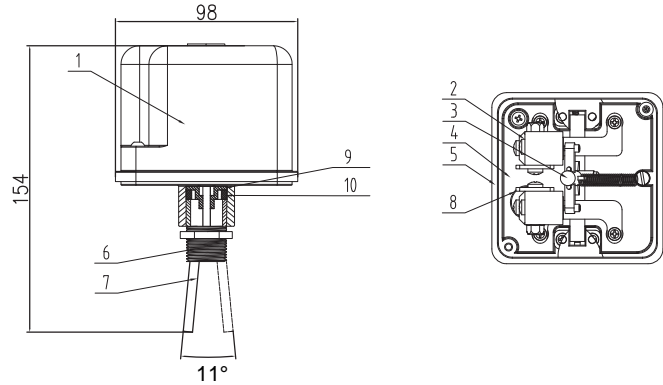
IP65



Contact Ratings: 15 Amps at 125/250VAC



IP Supervisory Switch



General Description

The Rapidrop Model RDIPS-2 is a weather proof and tamper resistant switch for monitoring the open position of post indicator, butterfly valves and other control valves.

Models

RDIPS-2

Connection

1/2" - 14NPT

Temperature Range

-10° - 80°C

Cover

Tamper Resistant Screws
Optional Cover Tamper Switch Available

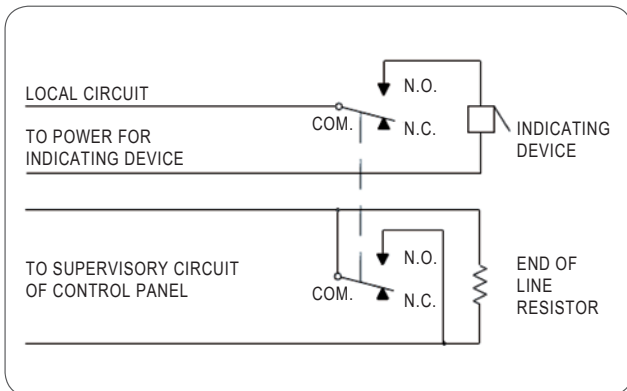
Electrical Ratings

15Amps at 125 / 250 VAC

Enclosure Rating

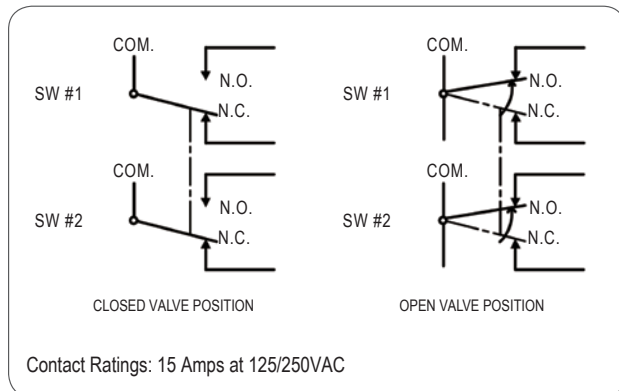
IP65

Wiring Diagram



Material Specification

Sr.	Description	Material
1	Outer Shell	ADC12
2	Micro Switch	
3	Rotary Shaft	PA66+GF30
4	Base	ADC12
5	Sealing Gasket	CR Foam Cotton
6	Connecting Pipe	AISI 304
7	Stem	AISI 304
8	Micro Stents	Carbon Steel Q235
9	Rubber Ring	EPDM
10	Pressure Sleeve	PTFE



Contact Ratings: 15 Amps at 125/250VAC